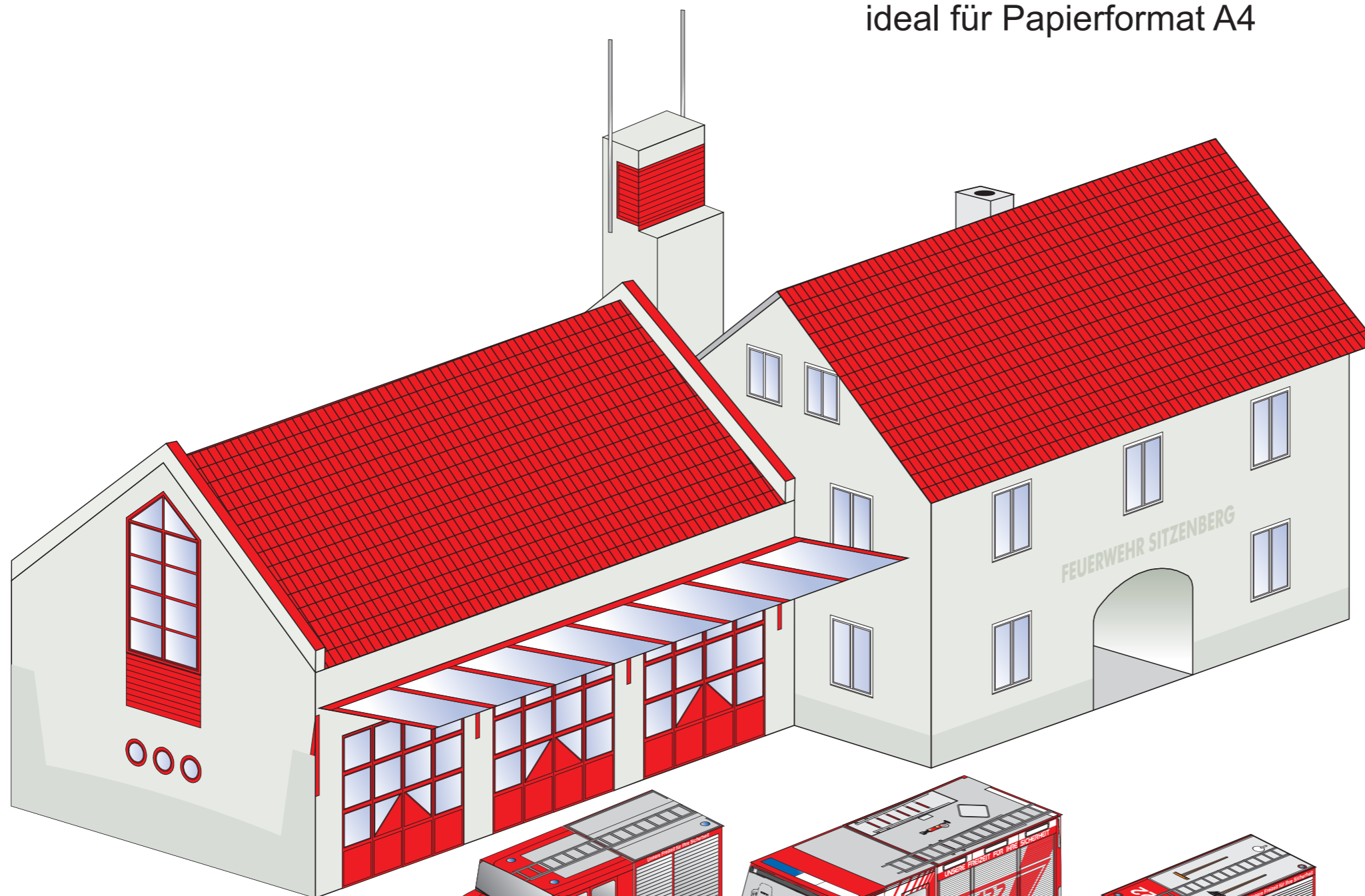


Bastellbogen 'Feuerwehrhaus Sitzenberg' inkl. Fahrzeuge

ideal für Papierformat A4



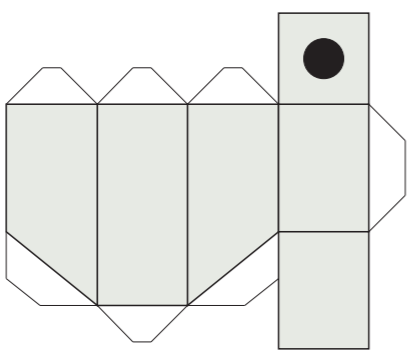
TLFA-2000
Tankfahrzeug

RLFA-3000
Rüstlöschfahrzeug

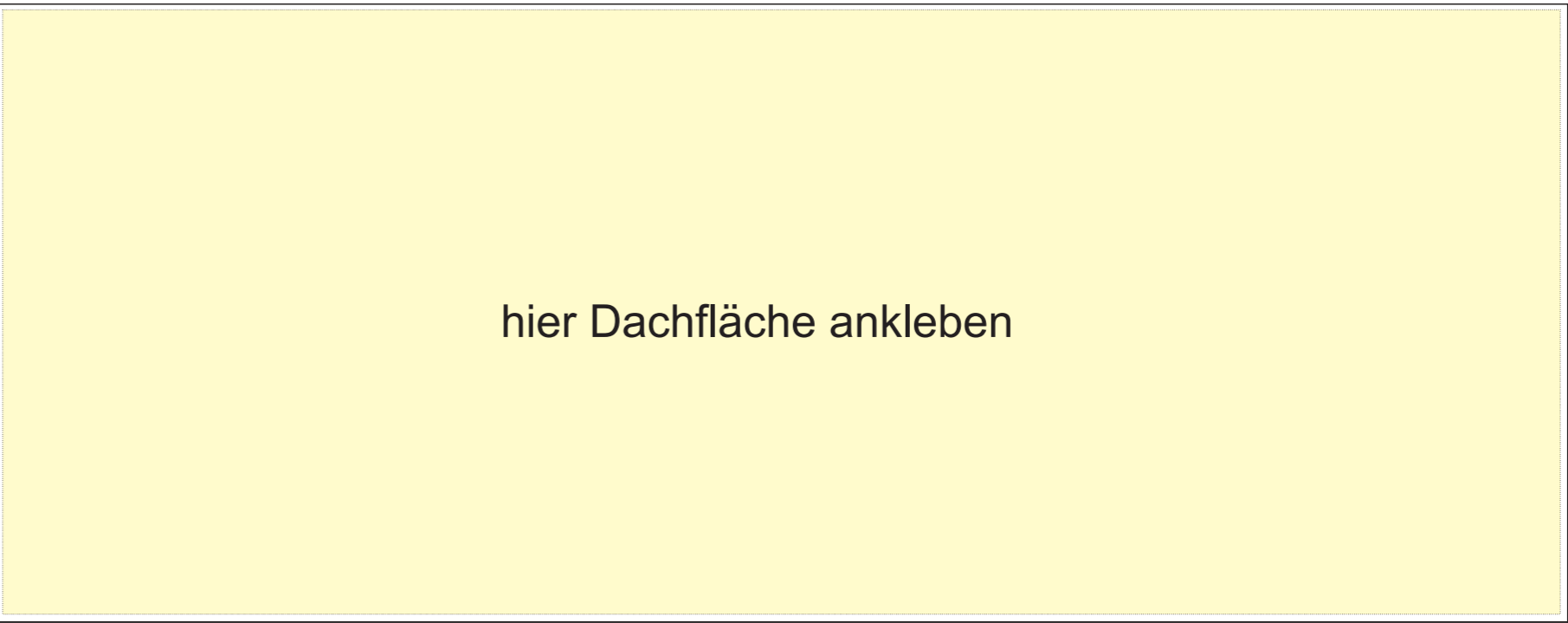
LF-B
Löschfahrzeug mit Bergeausrüstung

LAST
Versorgungsfahrzeug

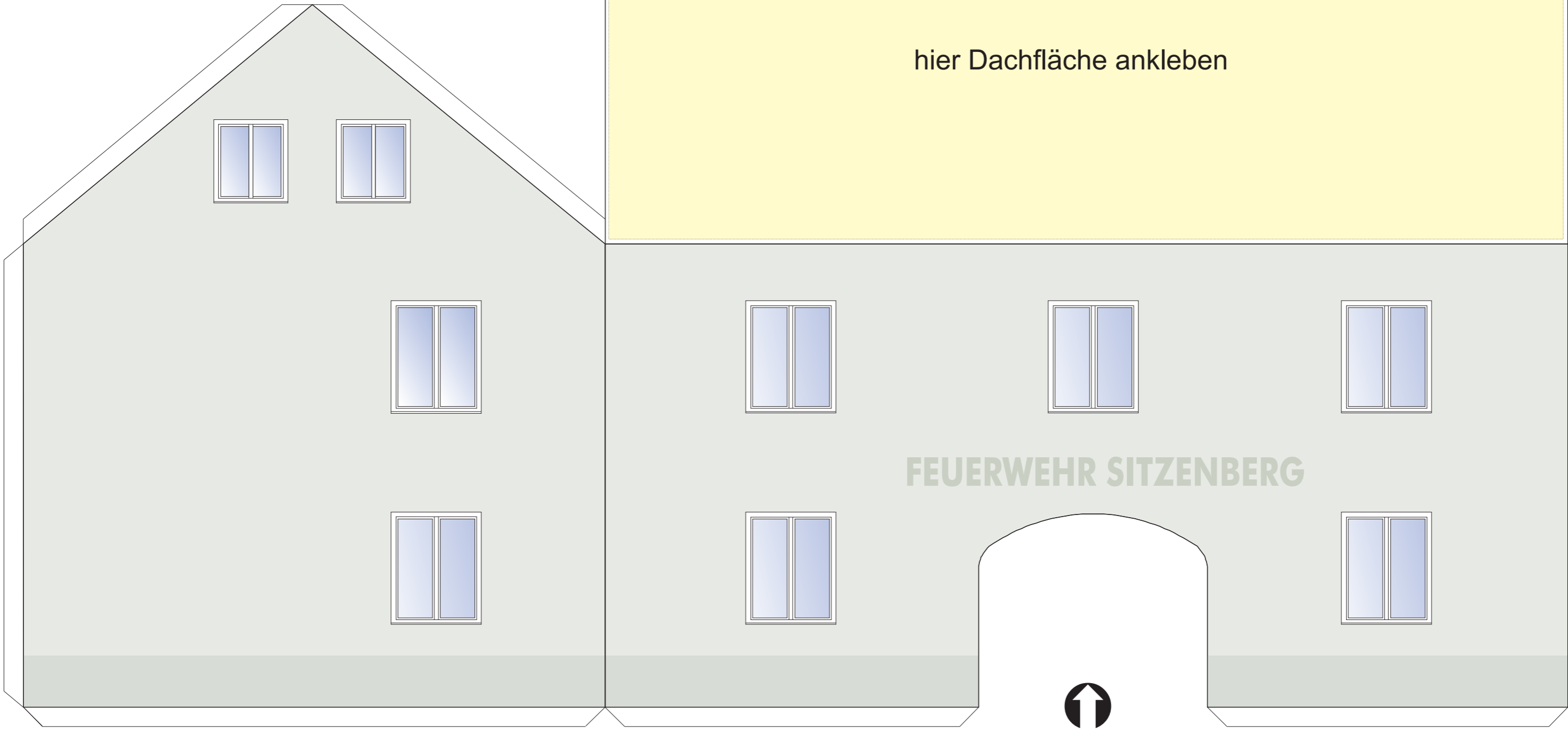
HAUS 1/3



Kamin

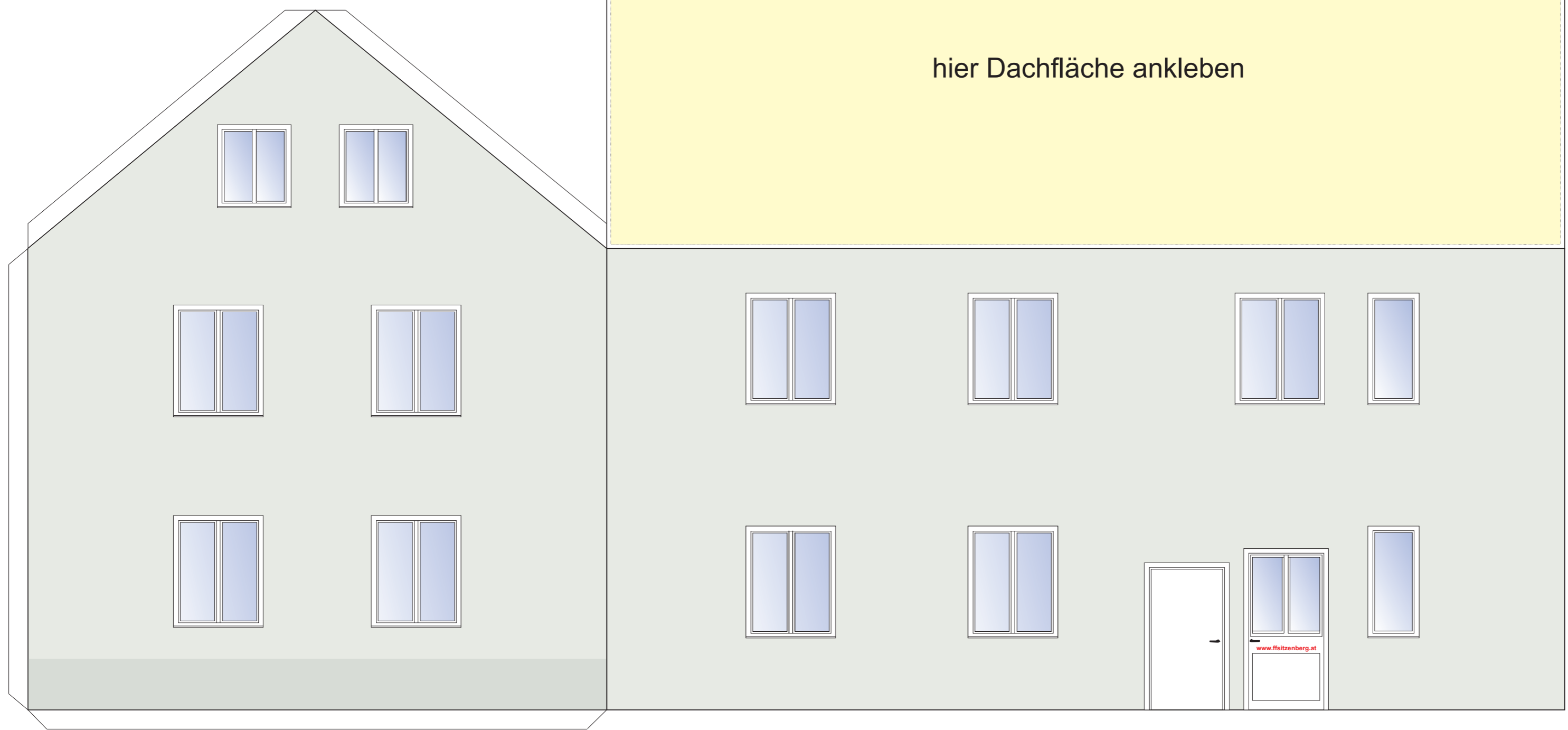
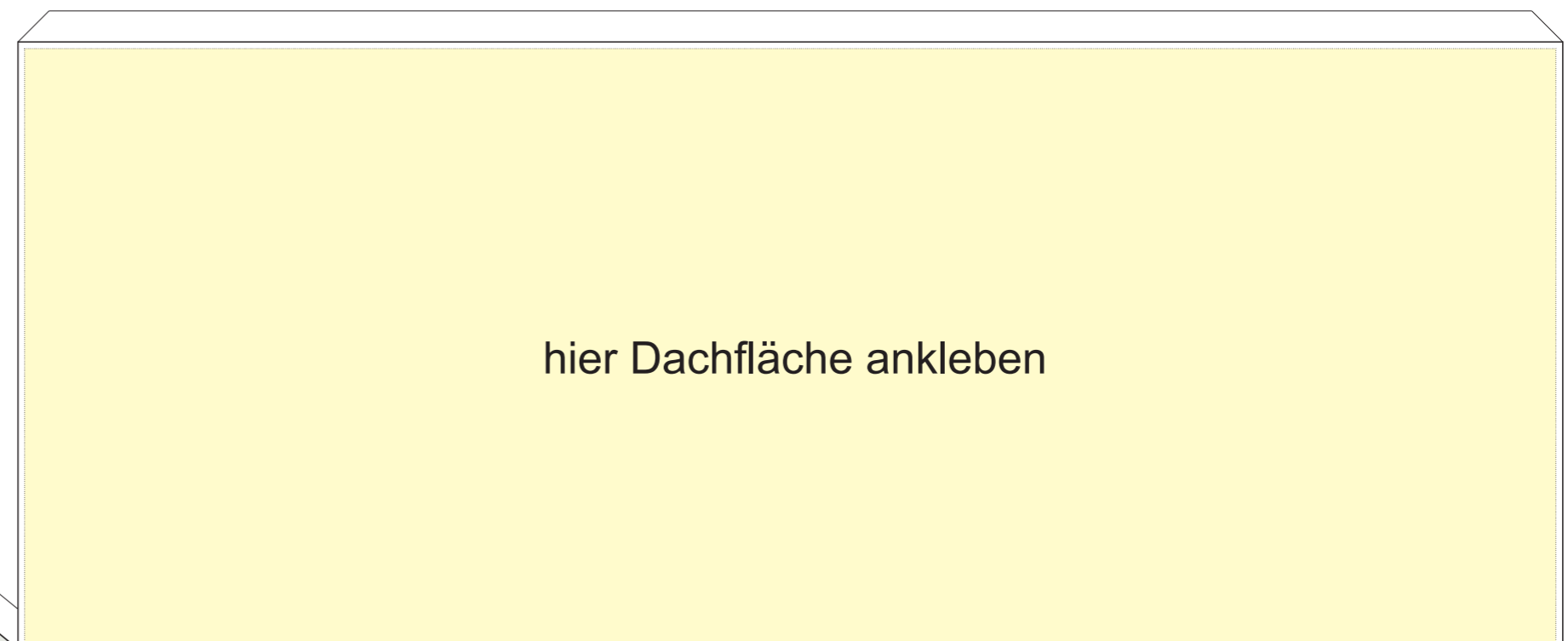
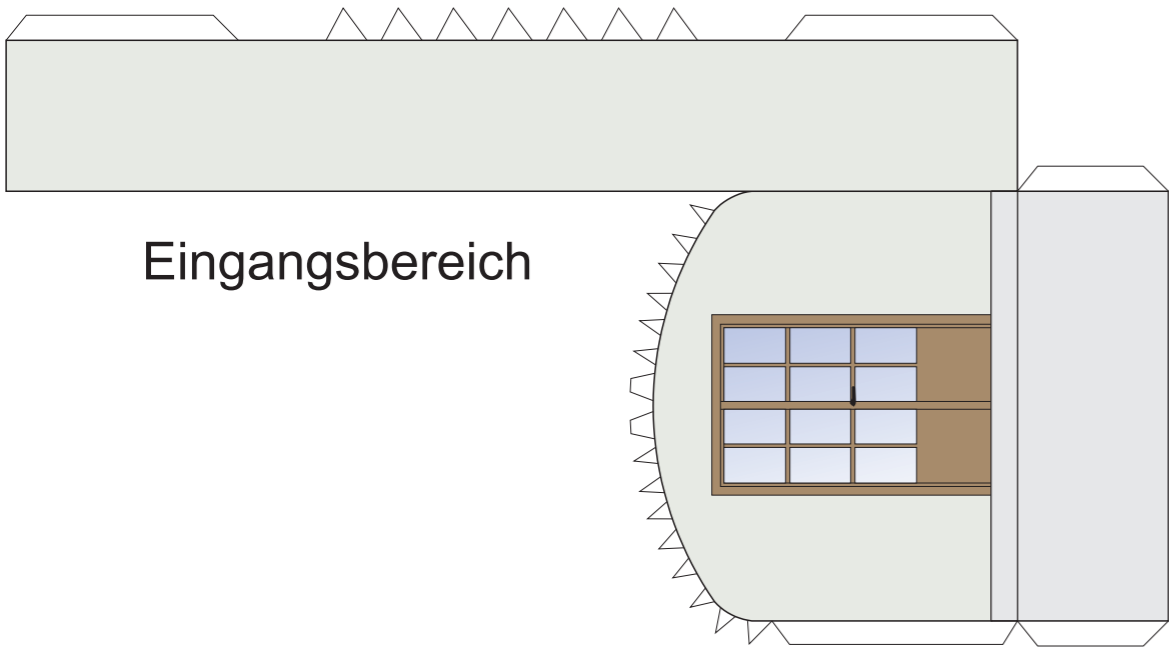


hier Dachfläche ankleben

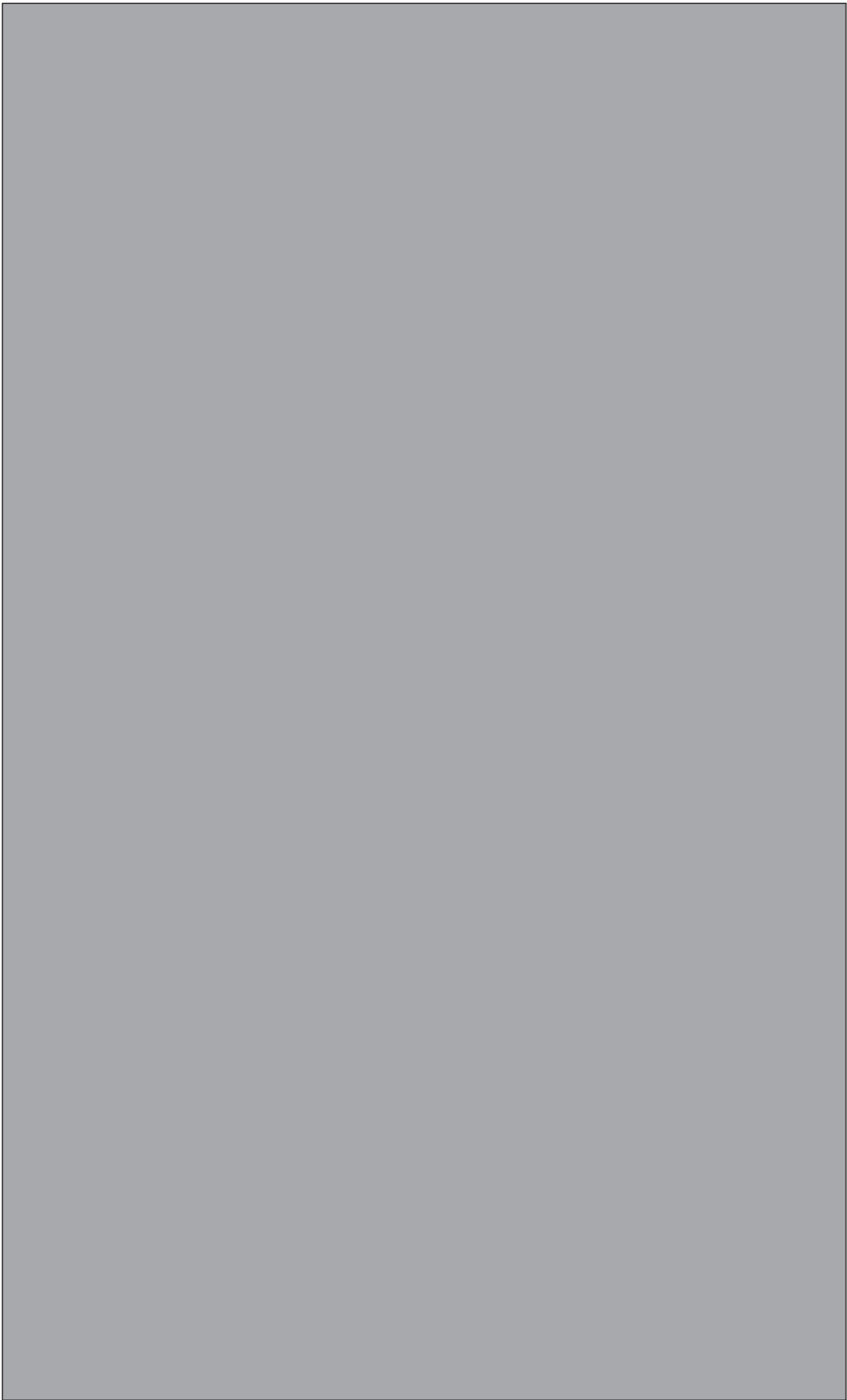


hier Eingangsbereich ankleben
Achtung: vor dem Zusammenkleben des Hauses ankleben

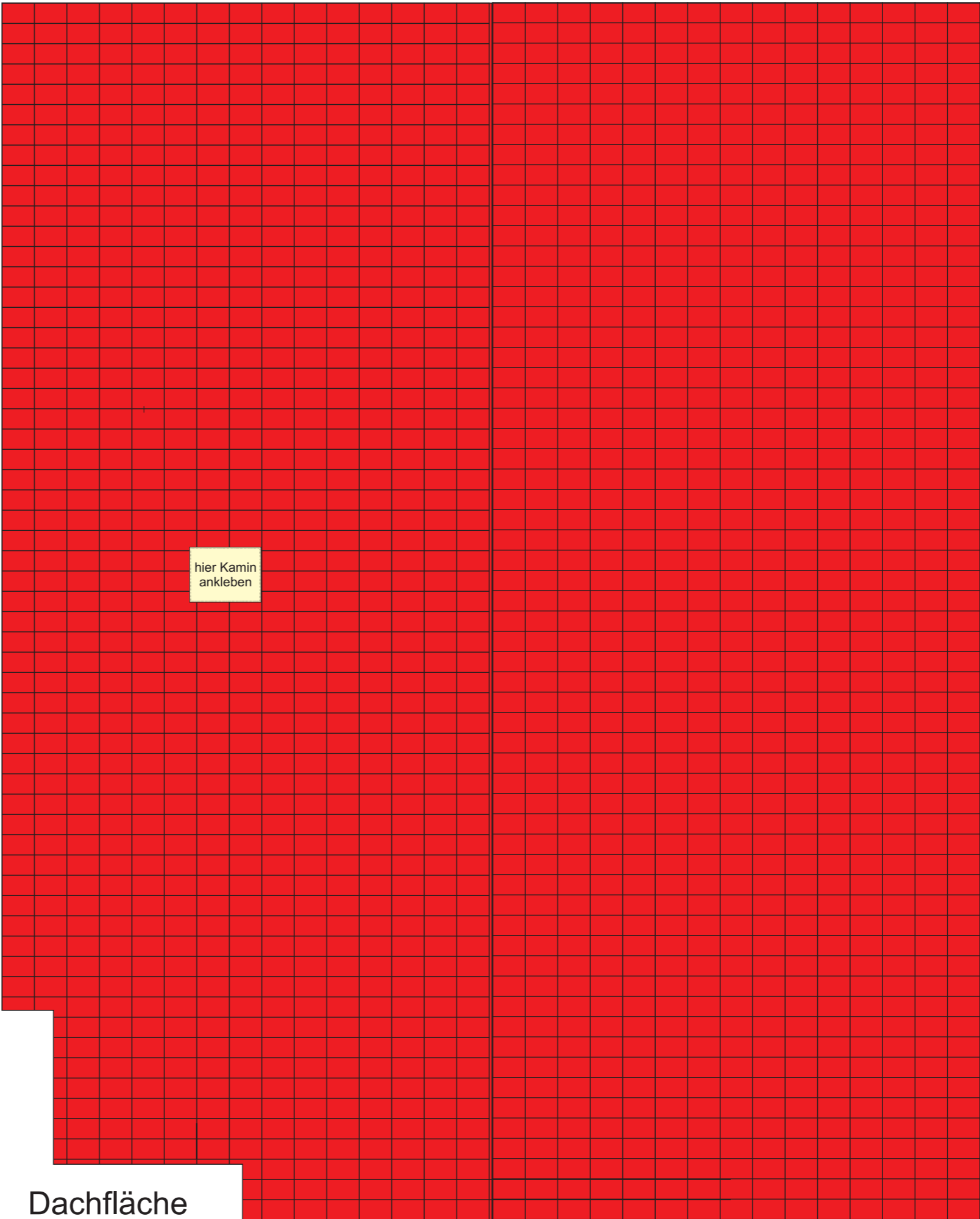
HAUS 2/3



HAUS 3/3

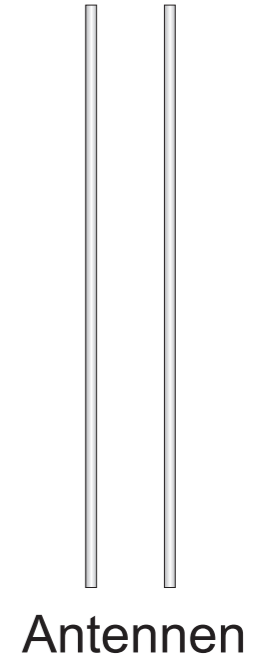
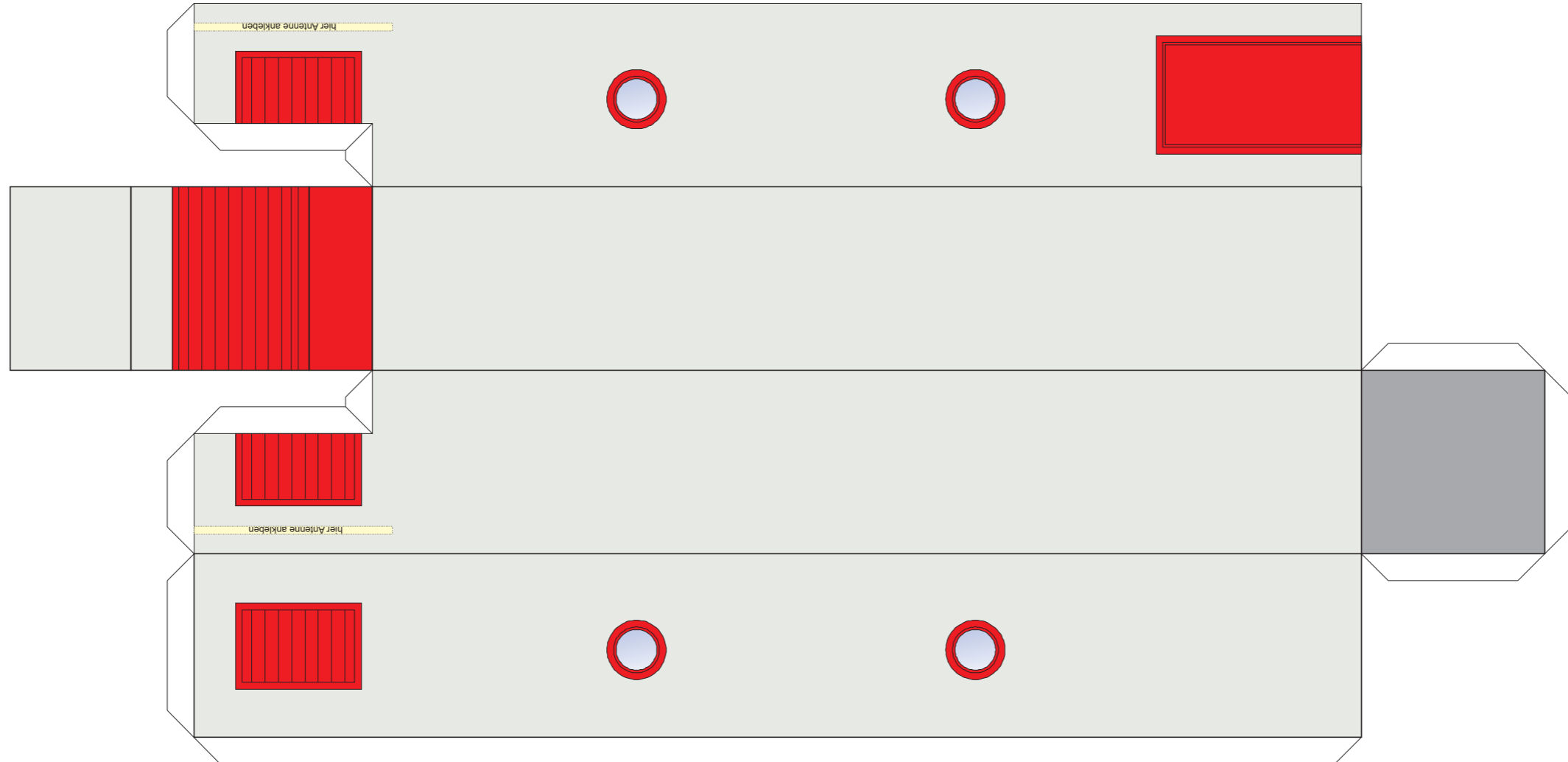


Grundfläche

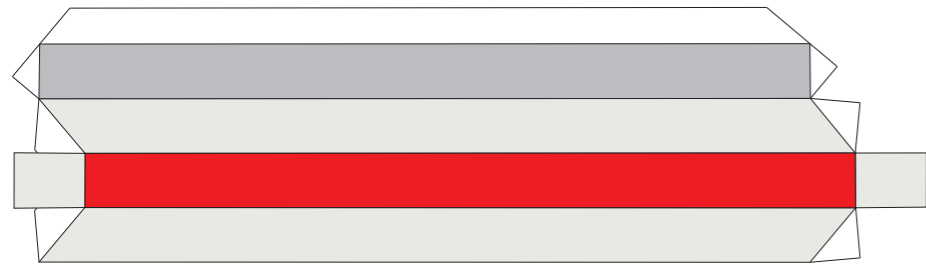


Dachfläche

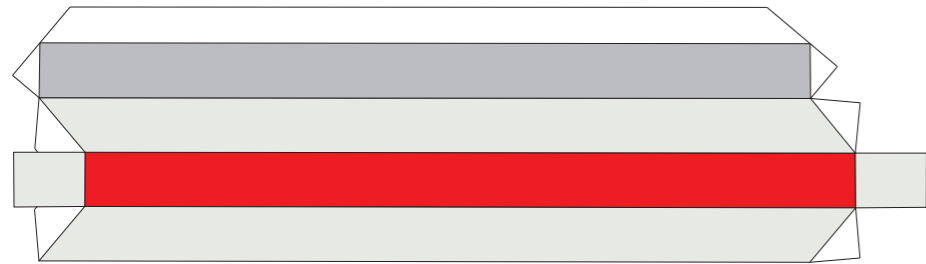
SCHLAUCHTURM 1/1



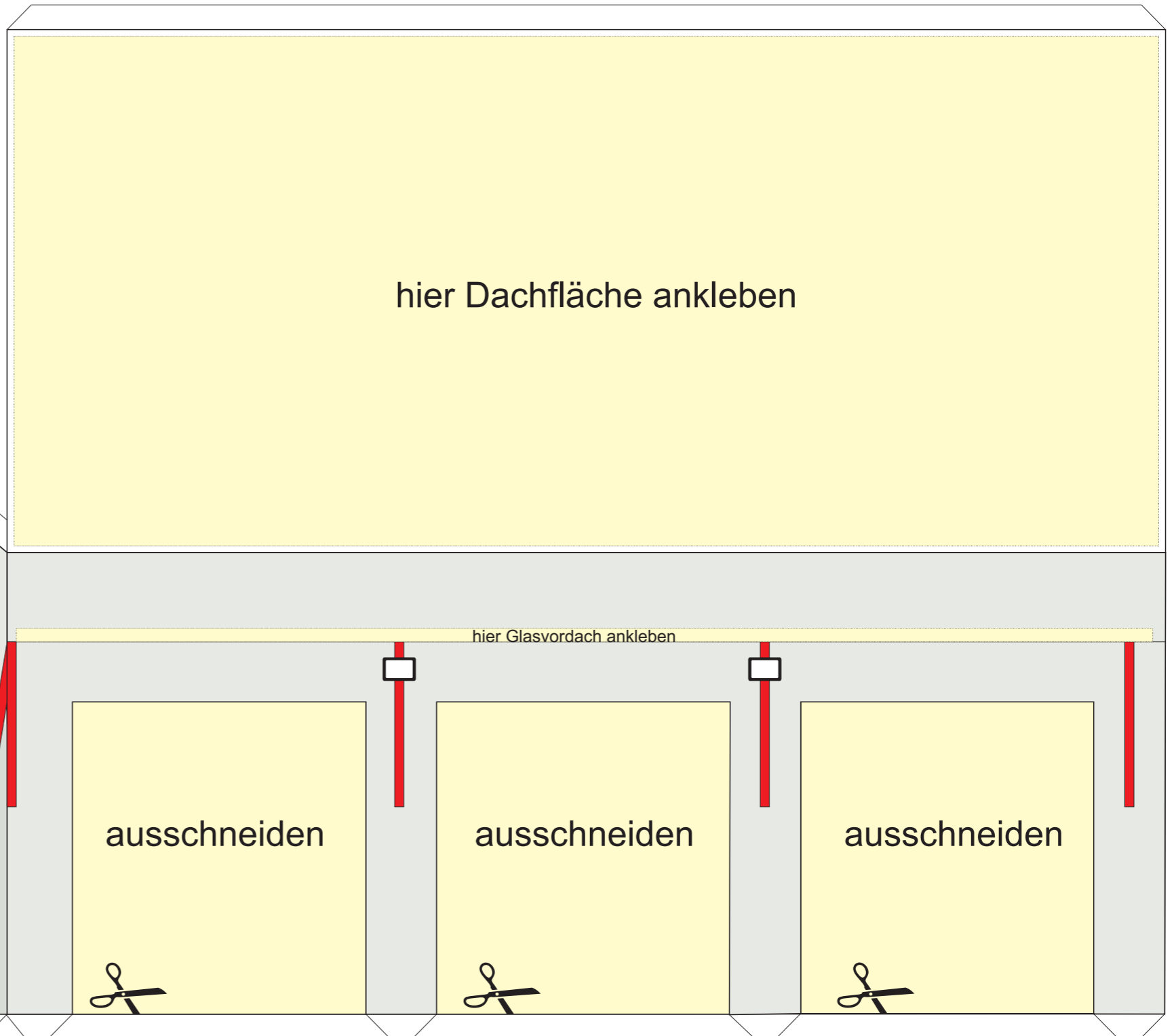
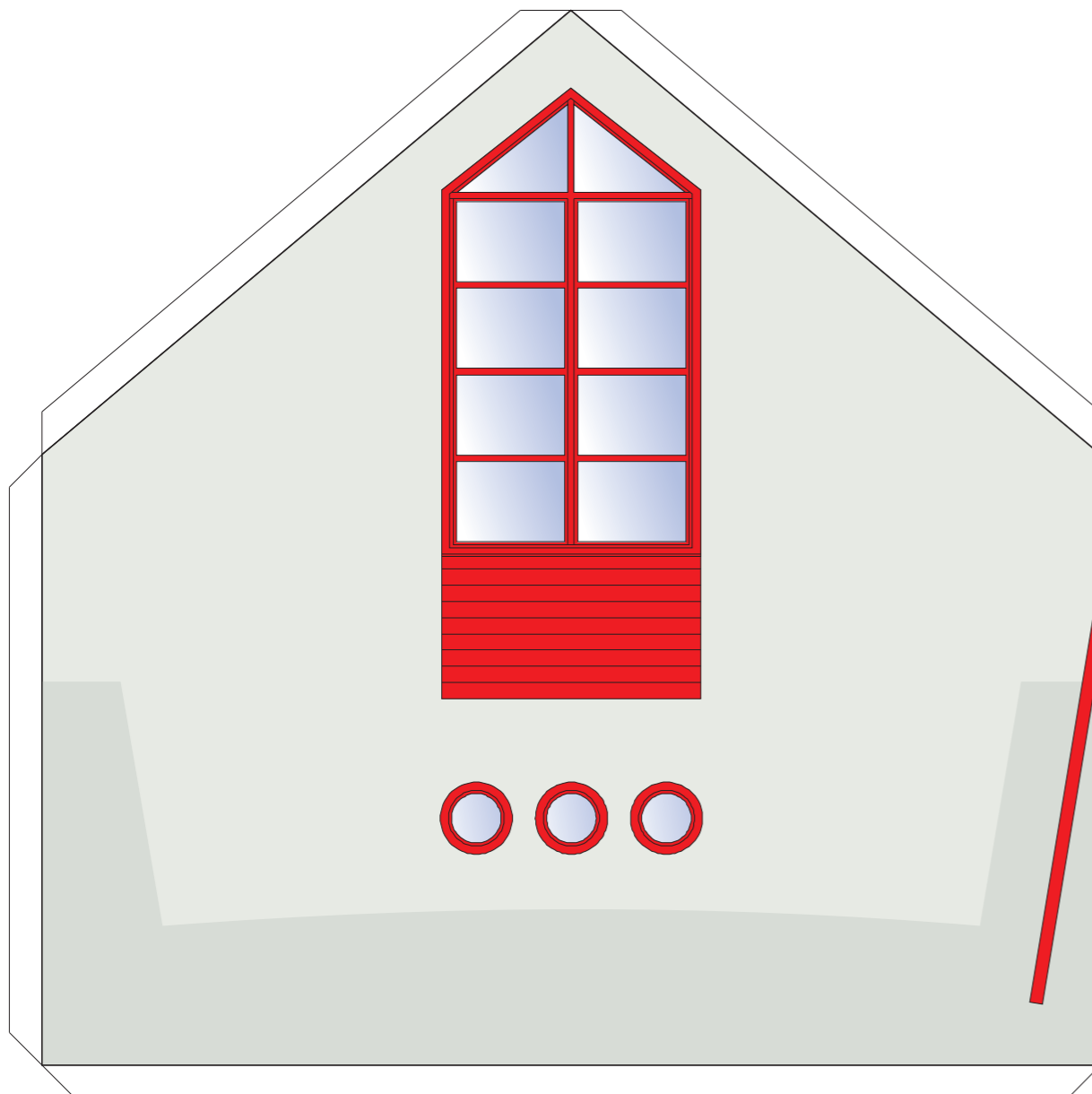
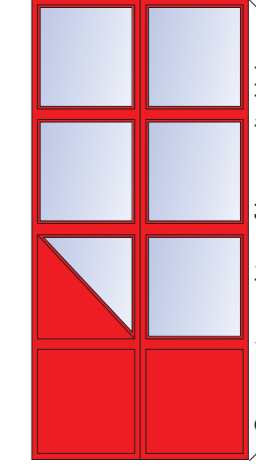
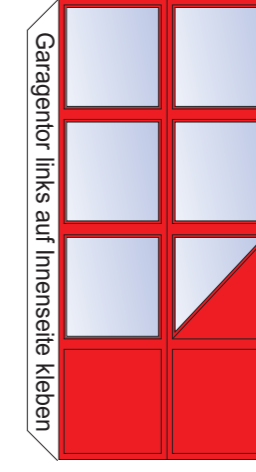
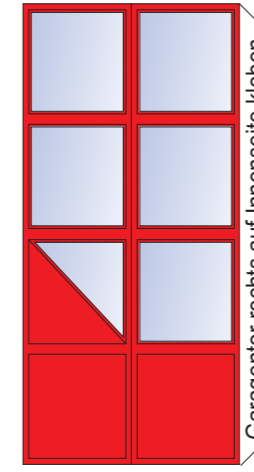
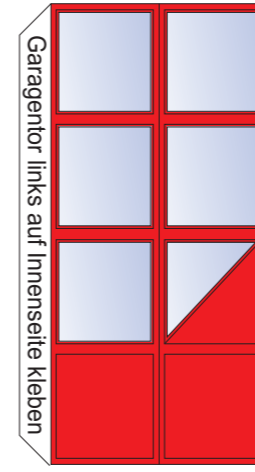
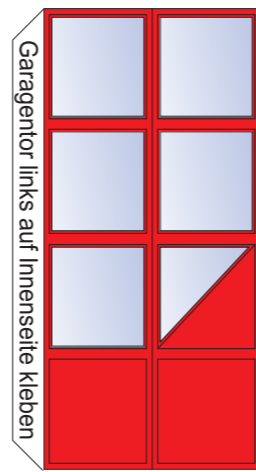
FAHRZEUGHALLE 1/3



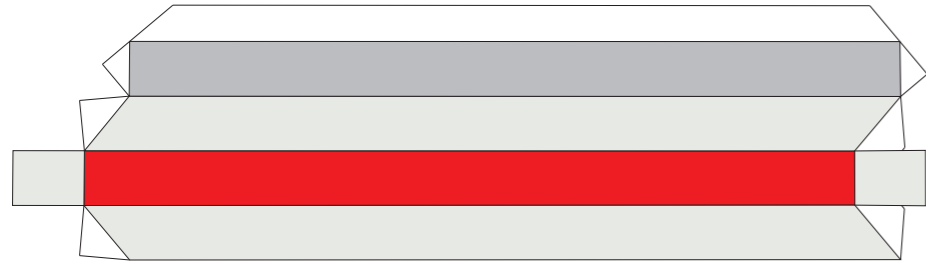
Übermauerung A



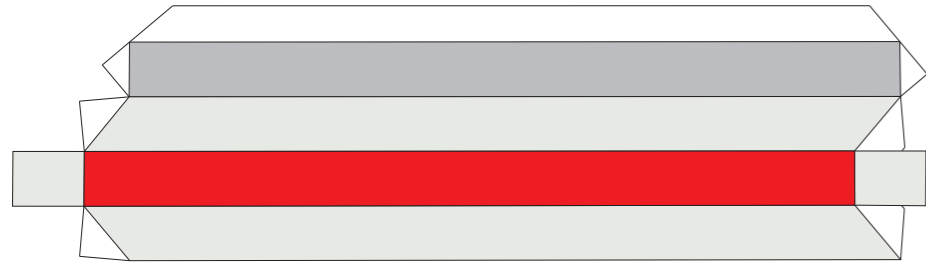
Übermauerung B



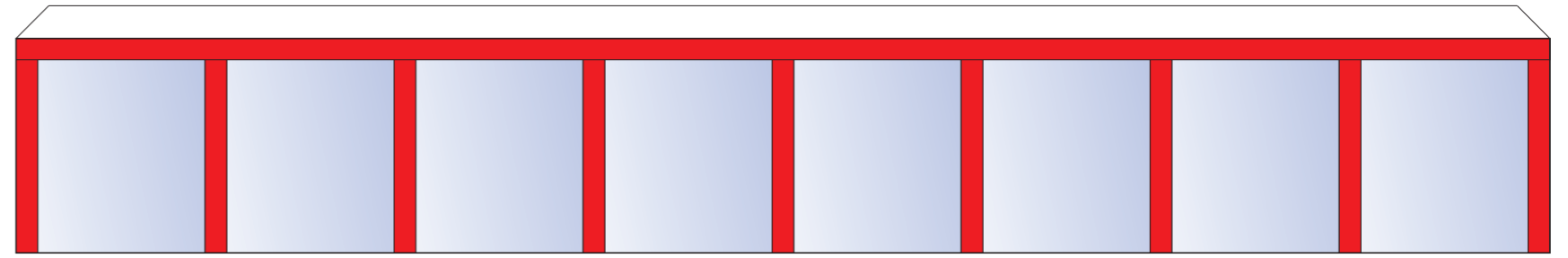
FAHRZEUGHALLE 2/3



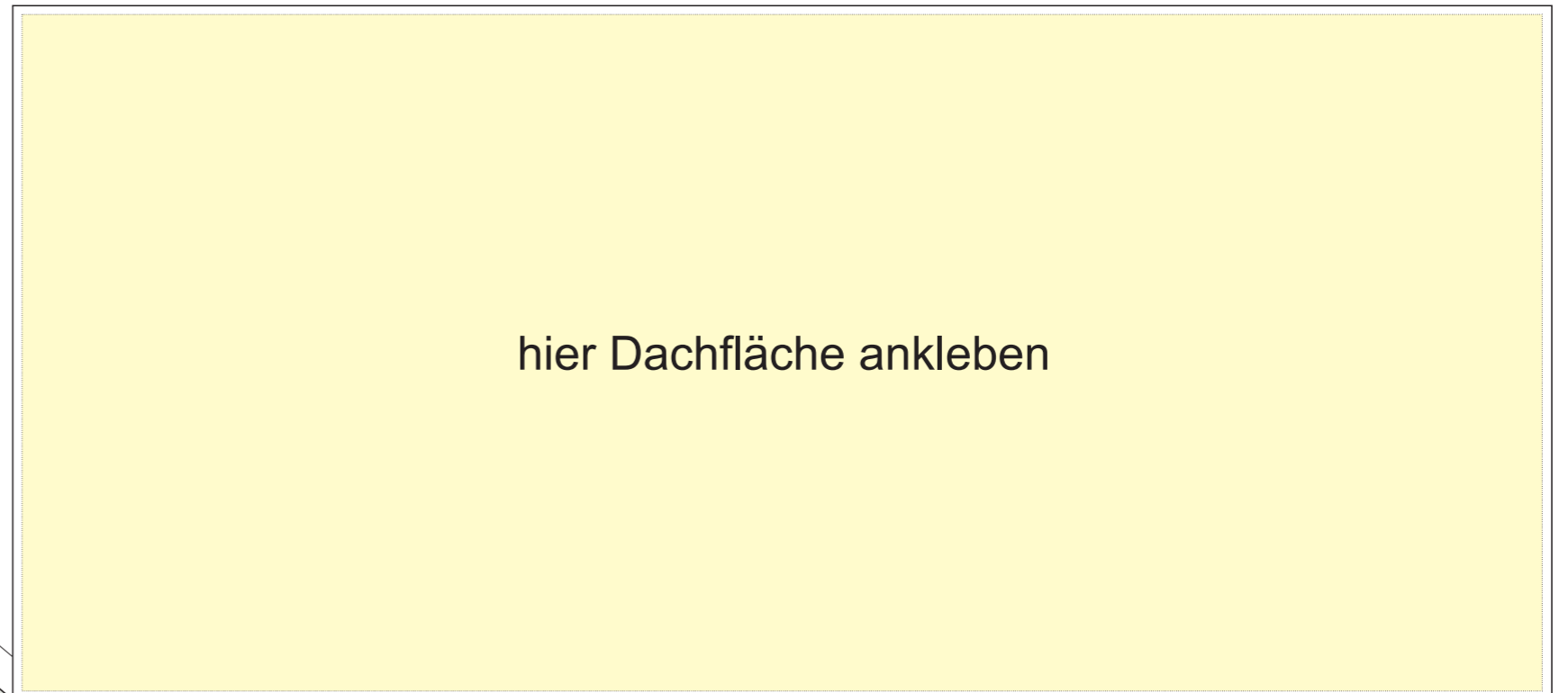
Übermauerung C



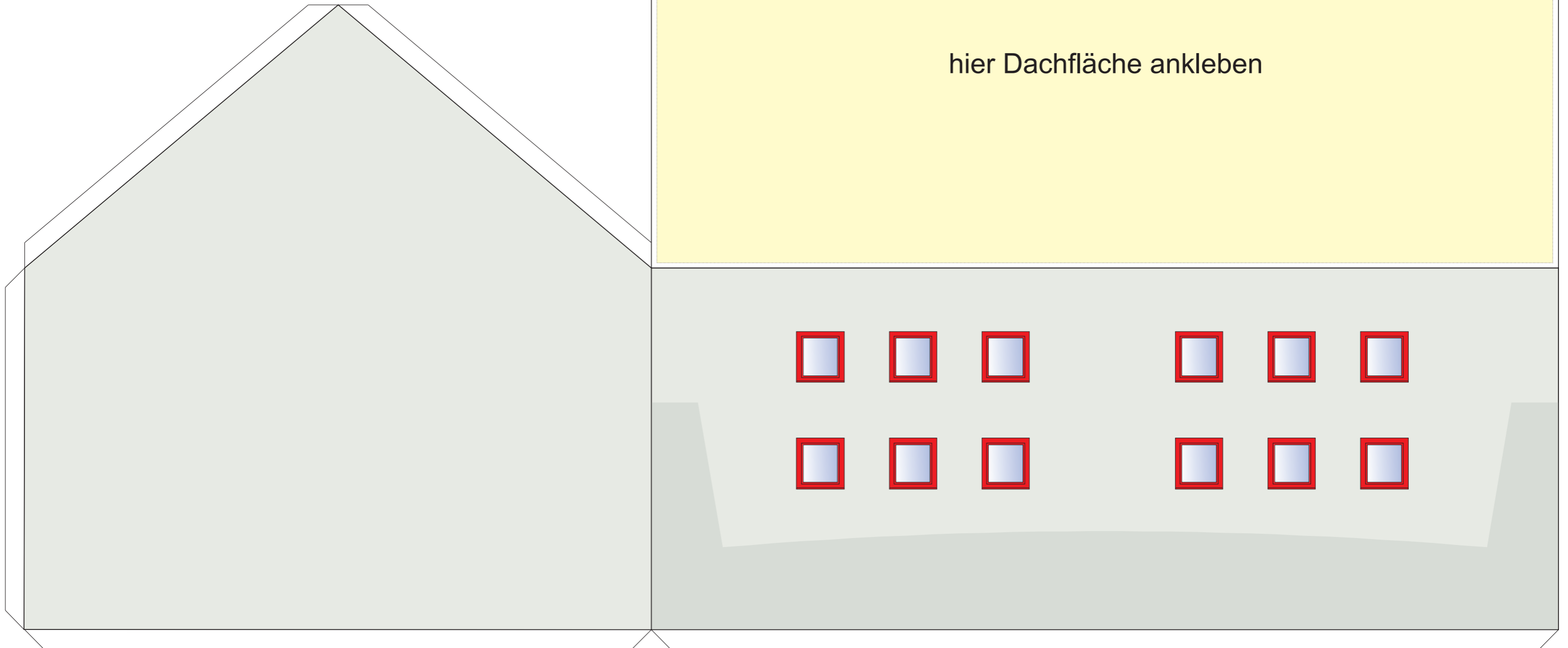
Übermauerung D



Glasvordach



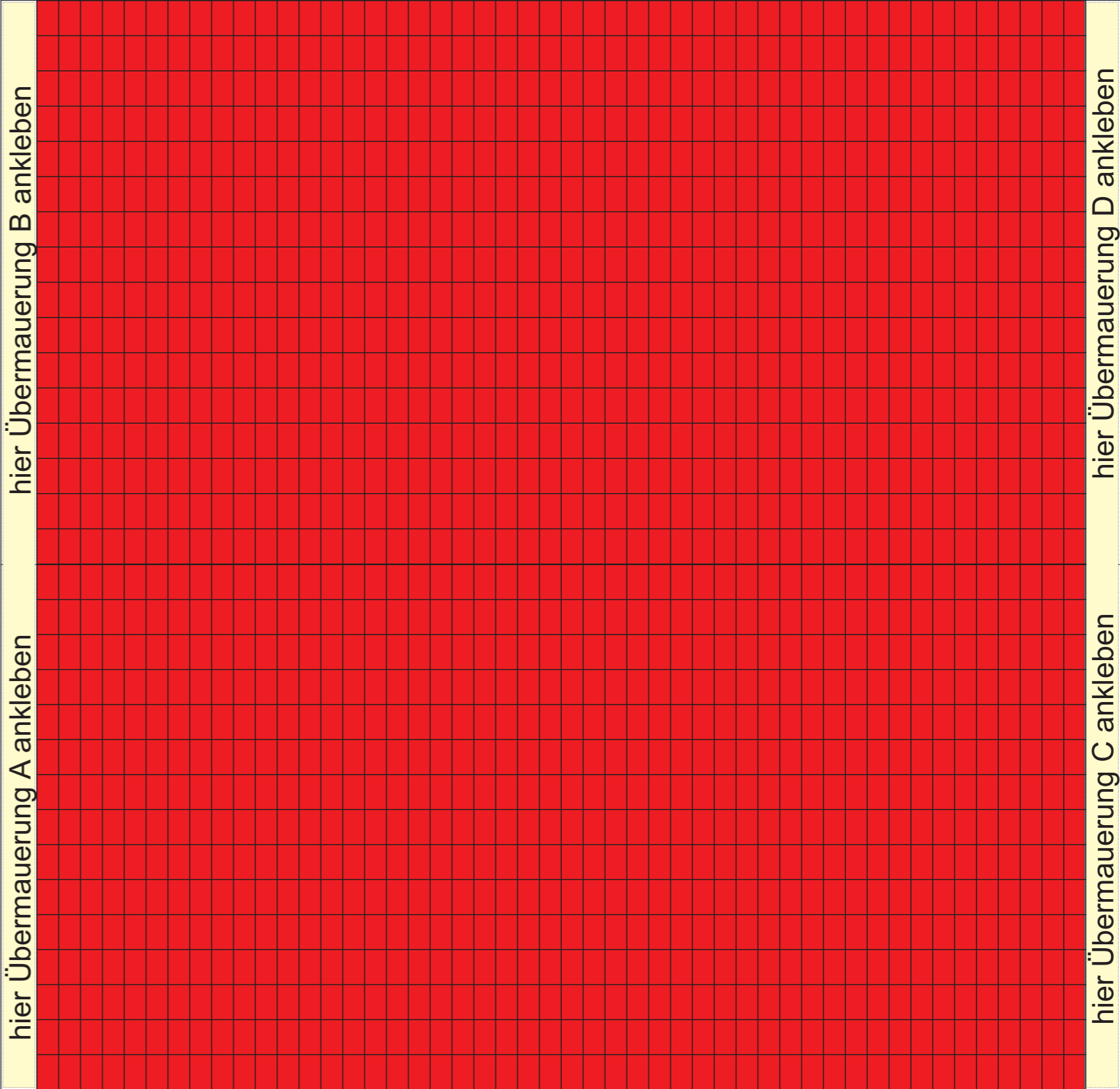
hier Dachfläche ankleben



FAHRZEUGHALLE 3/3



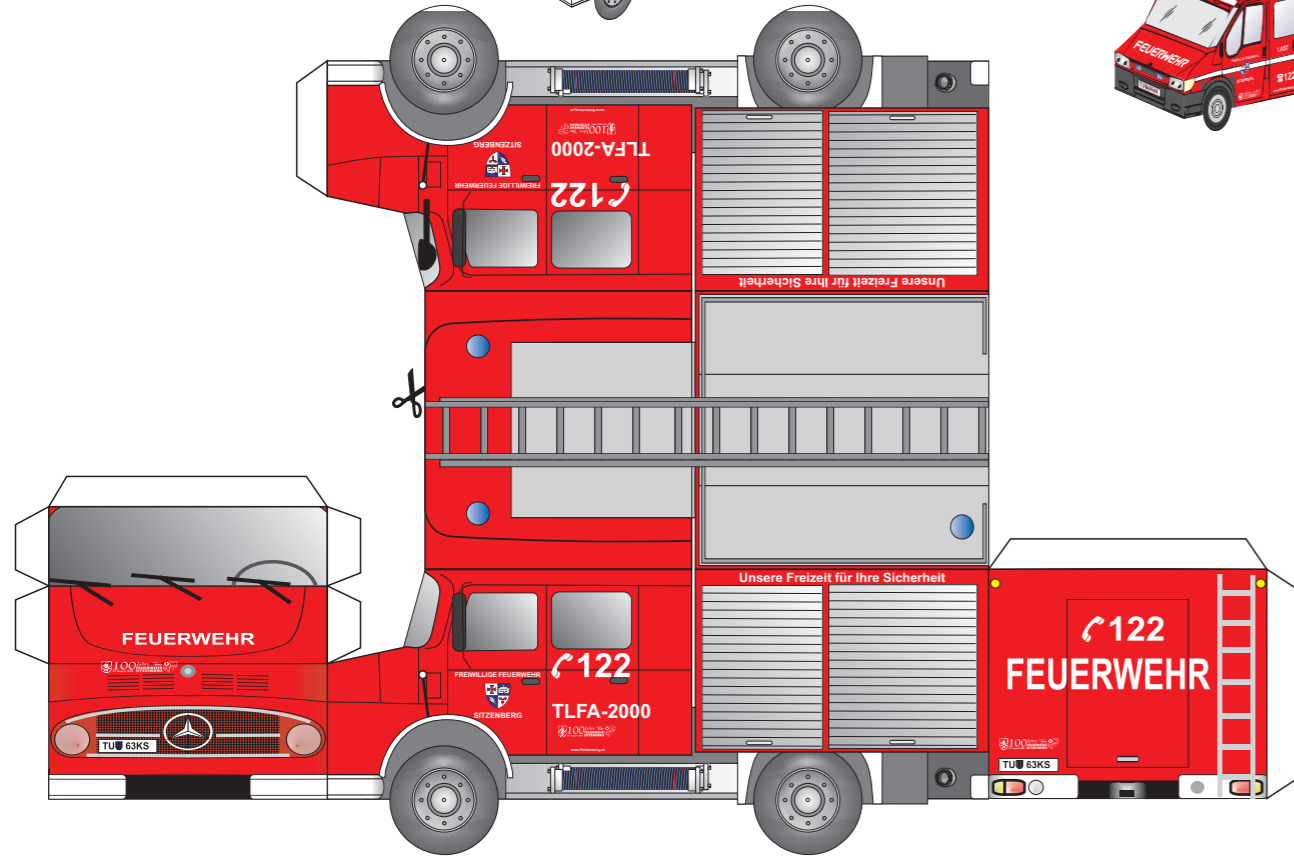
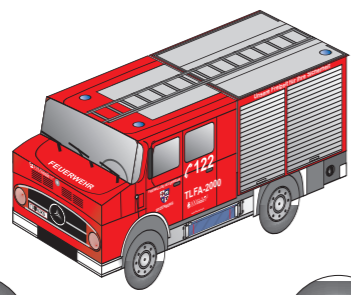
Grundfläche



Dachfläche

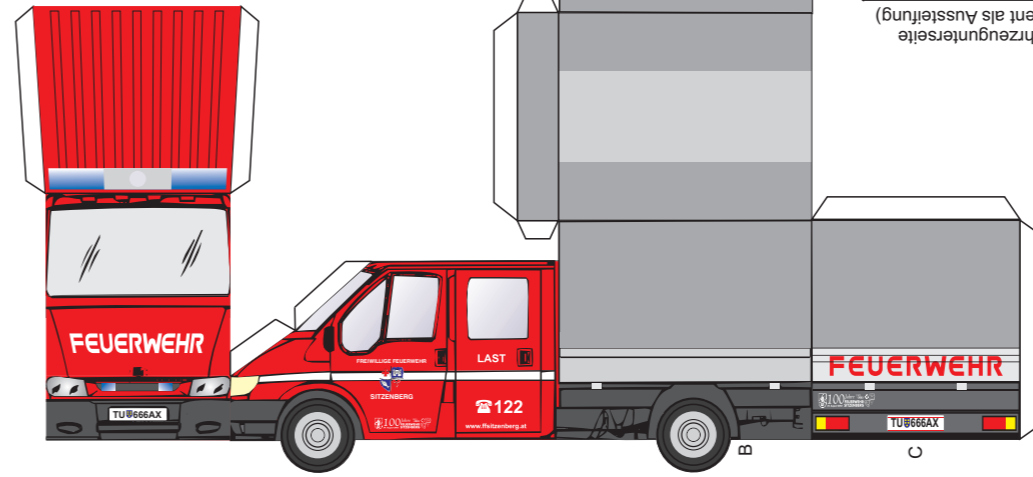
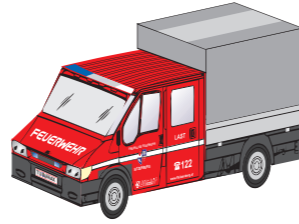
TLFA-2000

Tankschfahrzeug

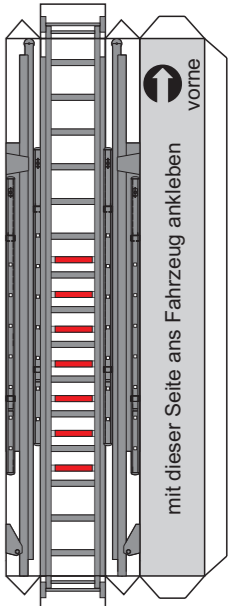


LAST

Versorgungsfahrzeug



Fahrzeugunterseite
(dient als Aussteifung)



Leiter

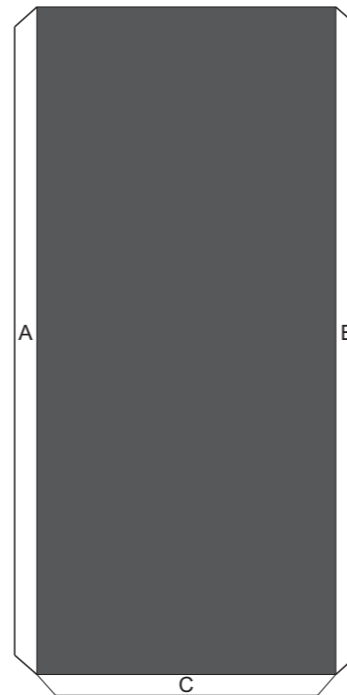
ausschneiden

falten

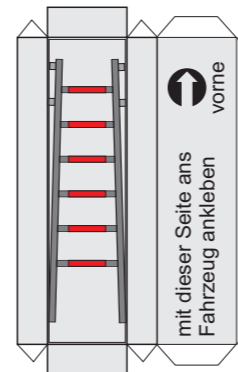
Laschen mit Klebstoff
bestreichen - zusammenkleben

RLFA-3000

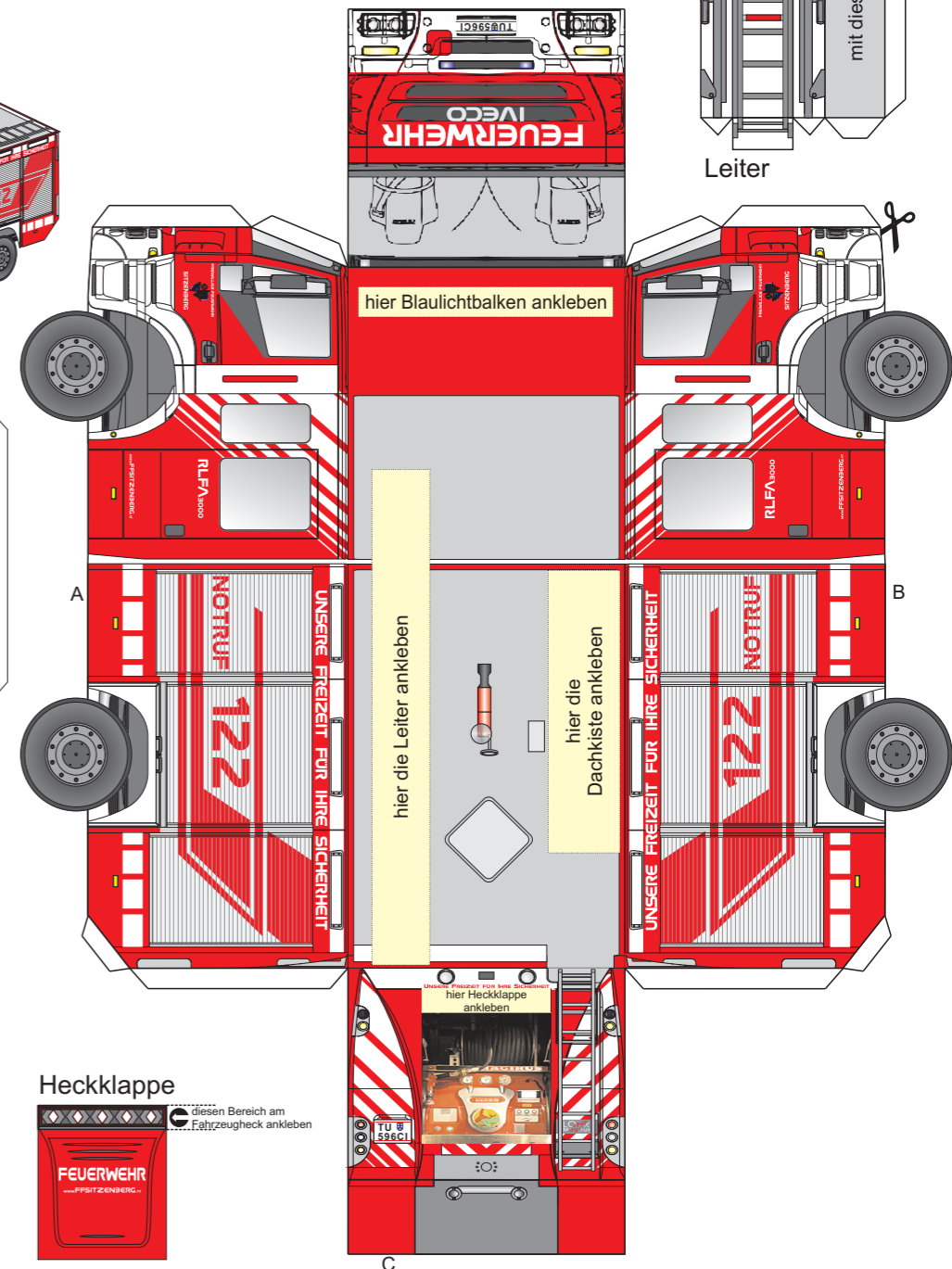
Rüstlöschfahrzeug



Fahrzeugunterseite
(dient als Aussteifung)



Dachkiste



hier Blaulichtbalken ankleben

hier die Leiter ankleben

hier die
Dachkiste ankleben

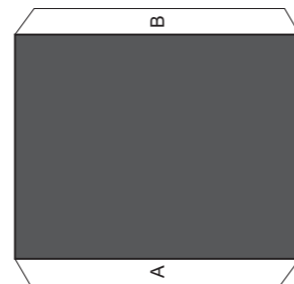
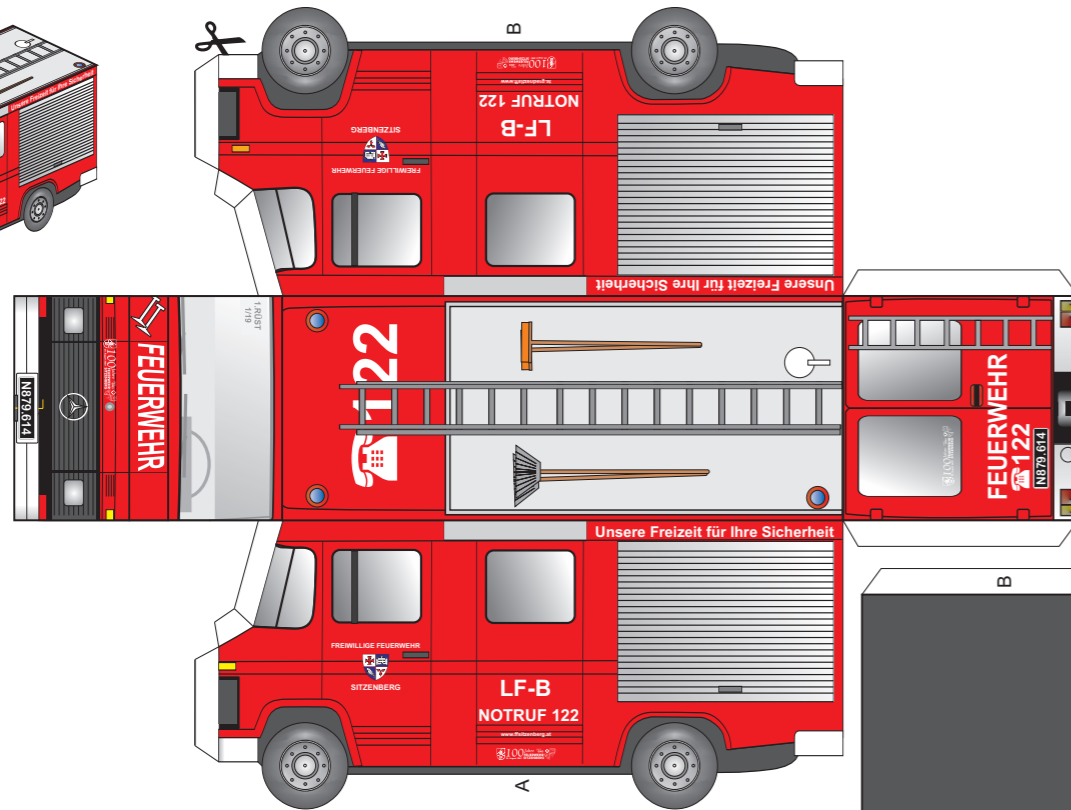
Heckklappe

diesen Bereich am
Fahrzeugheck ankleben

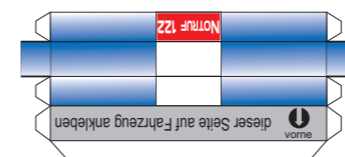


LF-B

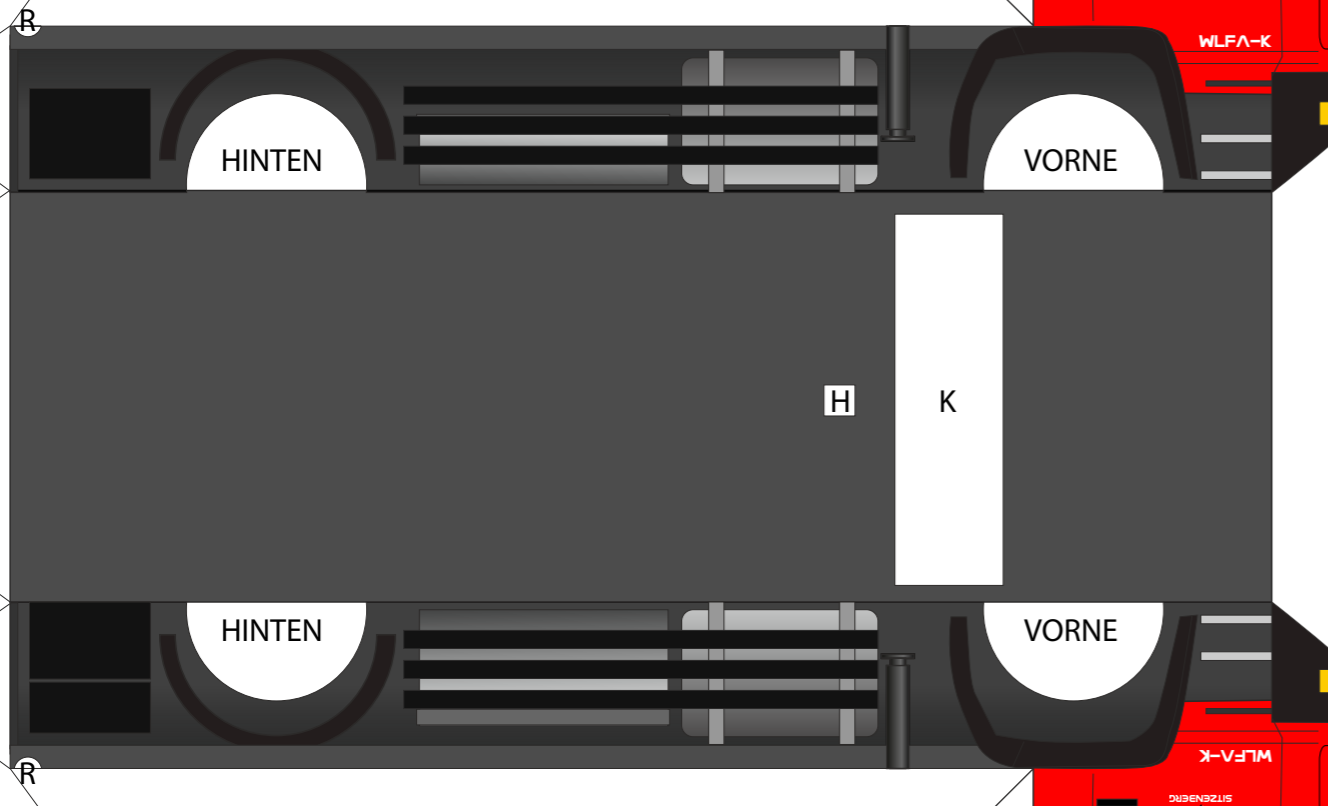
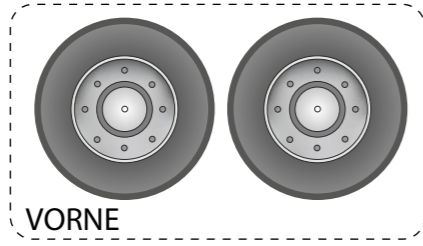
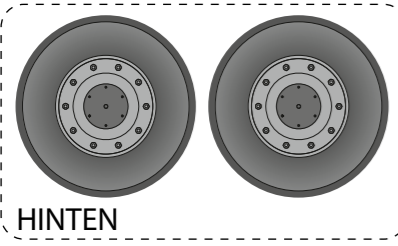
Löschfahrzeug mit Bergeausrüstung



Fahrzeugunterseite
(dient als Aussteifung)

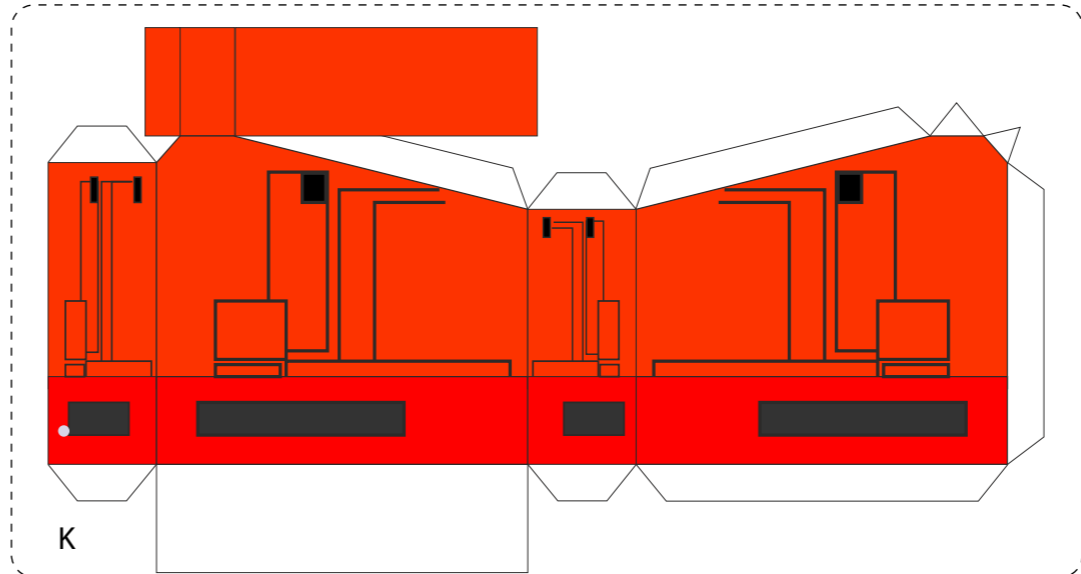
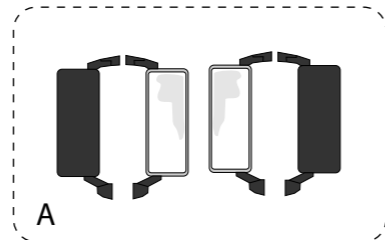
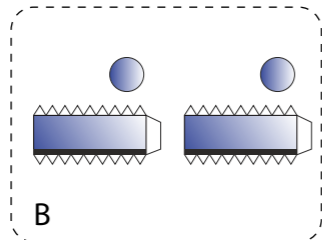
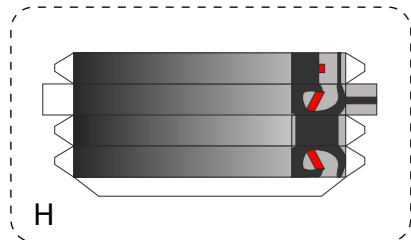
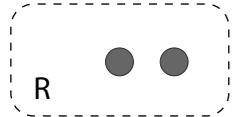


Blaulichtbalken



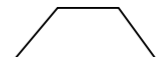
WLF-A-K SITZENBERG

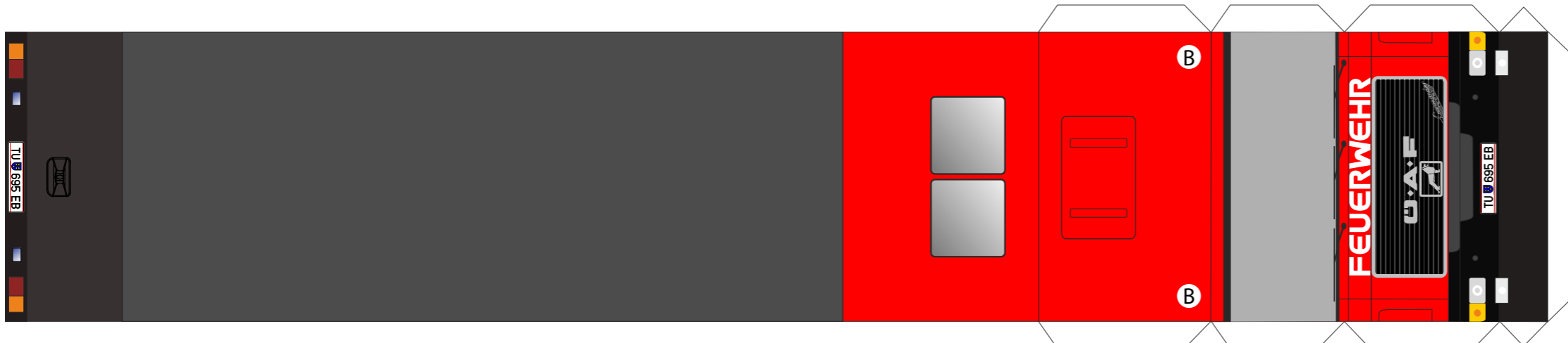
Dein eigenes Feuerwehrauto ganz einfach selber basteln



 ausschneiden

falten

 Laschen mit Klebstoff bestreichen - zusammenkleben



Viel Spaß beim Basteln wünscht Dir Deine
FEUERWEHR SITZENBERG

im Internet unter: www.FFSITZENBERG.AT